

# serco



## Skills Support for the Workforce in Worcestershire

Fully funded training  
courses to help your  
business grow

**Skills Support for the Workforce (SSW)** is a programme developed to upskill employees within small and medium-sized businesses in Worcestershire. We provide recognised accredited qualifications and bespoke training courses to enhance your employees' skills, increase the competitiveness of your business and boost the local economy.

We can work with you to develop a bespoke training programme relevant to your needs, and because this programme is co-funded by the European Social Fund (ESF) and the Skills Funding Agency (SFA), you can support your workforce at no extra cost to your business.

#### **Benefits for your employees and business**

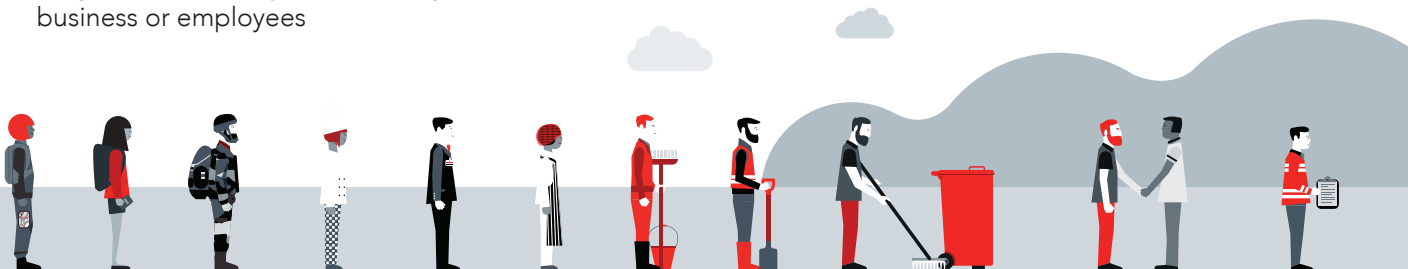
- Training is tailored to the specific needs of your business
- Can be more cost-effective than hiring skilled employees
- Increases employee confidence, motivation and productivity
- Improves employee loyalty and retention by making them feel valued
- Fully-flexible training; pick full qualifications or mix and match individual units to suit your business
- On-the-job vocational training to meet individual needs; including taught learning, workplace assessment, distance learning and online learning.
- Fully funded training – no cost to your business or employees

The fully funded training is available for eligible businesses in the following priority sectors:

- Advanced Manufacturing
- Cyber Security & Defence
- Agri-Tech/Agri-Food
- Visitor & Destination Economy
- Businesses requiring STEM (Science, Technology, Engineering and Maths) qualifications

*Other sectors may be eligible, please contact us to find out.*

Employees will benefit from a wide variety of training courses like leadership and management, technical skills training and higher level skills relevant to your business. Completing the training can help your employees continue to higher level qualifications, take on more responsibility, and progress in their careers.



## About Serco

Serco is a leading provider of public services. Its Employment, Skills and Enterprise business was selected by the Skills Funding Agency to manage the SSW programme in your region, in partnership with Worcestershire Local Enterprise Partnership. Serco delivers the training through a network of high quality local training providers.

So far we have supported over 1,500 businesses with training for their workforce and over 6,000 employees have benefited from our service. You can trust us to help your business grow too.

Contact us today for more details and to find out if you are eligible for funded training through SSW: [skillssupport@serco.com](mailto:skillssupport@serco.com)

Serco works in partnership with



**Worcestershire**  
Local Enterprise Partnership

### Training providers:

3aaa - Aspire Achieve Advance  
APM

Business Development Midlands Limited  
Heart of Worcestershire College  
Heartbeat UK  
HIT Training Ltd  
HR Champions Limited  
TDM Wyre Academy

Co-financed by



**Skills Funding  
Agency**



**European Union**  
European  
Social Fund